

INSTALLATION INSTRUCTIONS

CARRIER BEARING 2024+ XP1000 2 SEAT



TOOLS REQUIRED

Jack stands
Jack
Bearing puller
Bearing press
15mm 17mm 13mm wrench
10mm 12mm 13mm 15mm
17mm socket
T40 torx
6mm Allen wrench
Torque wrench
2 or 3 jaw gear puller
1.5" x 8" pipe/sleeve
Hammer

CARRIER BEARING, BRASS RING, THREADLOCKER



INSTALLATION INSTRUCTIONS

CARRIER BEARING 2024+ XP1000 2 SEAT



REMOVAL OF OE CARRIER BEARING

NOTE: On the 2 seat model, there is very little room to access and remove the rear section of the OE driveline. There are several ways you can do this, the following steps outline the most efficient way in our opinion.

REMOVAL STEP 1:

Remove the skid plates, lift rear tires off the ground & secure with jack stands on the frame.

REMOVAL STEP 2:

Loosen 2X allen 6mm from the pinch clamp on the driveline at the transmission.

REMOVAL STEP 3:

Remove the safety hoop from the driveline (T40). You will re-install this later so note the position & orientation.

REMOVAL STEP 4:

Remove 2X 15mm socket carrier bearing bolts.

REMOVAL STEP 5:

Place a jack under the transmission to support the weight of the transmission. This releases the pressure from the transmission mount. See jack location below.



REMOVAL STEP 6:

Remove the band clamp from the muffler to the exhaust pipe. Disconnect the muffler from the exhaust.

REMOVAL STEP 7:

Disconnect the main clutch cover vent tube (8mm).

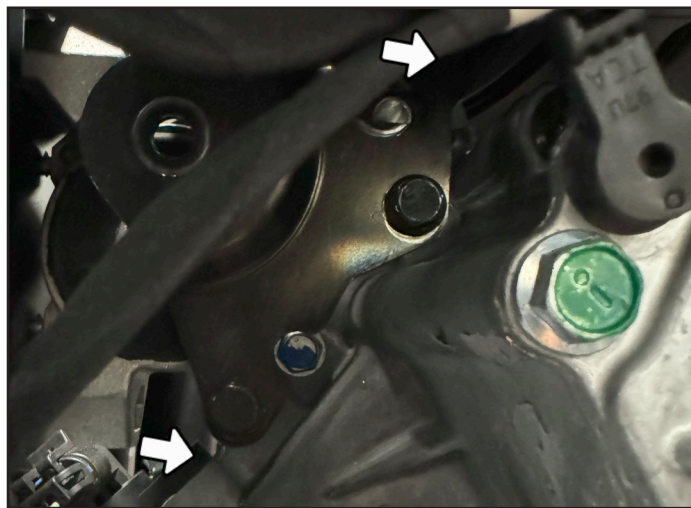
REMOVAL STEP 8:

Remove the transmission mount throughbolt. This is why you are supporting the transmission, otherwise you would not be able to remove this bolt (15mm).



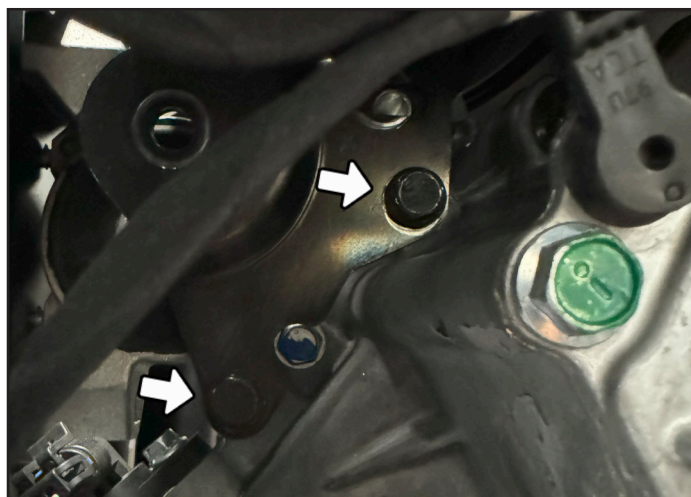
REMOVAL STEP 9:

Remove the upper throughbolt mounting the airbox to the transmission from the passenger side (13mm).



REMOVAL STEP 10:

From the passenger side, loosen 2X 12mm lower throughbolts from the transmission bracket. Do not remove, just loosen. There are weld nuts on the driver side transmission bracket.



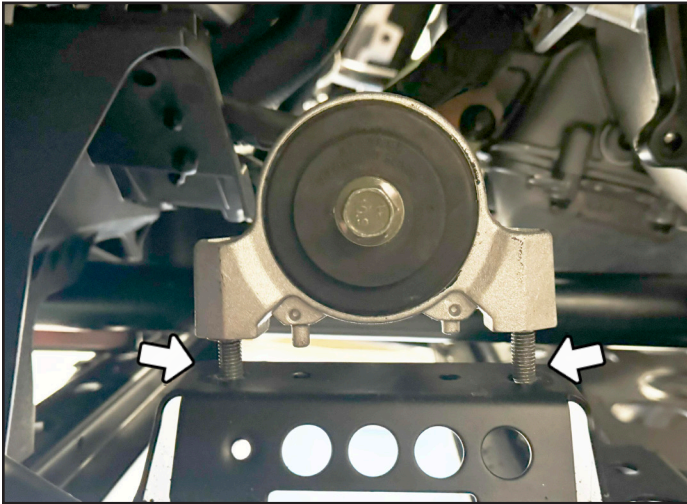
INSTALLATION INSTRUCTIONS

CARRIER BEARING 2024+ XP1000 2 SEAT



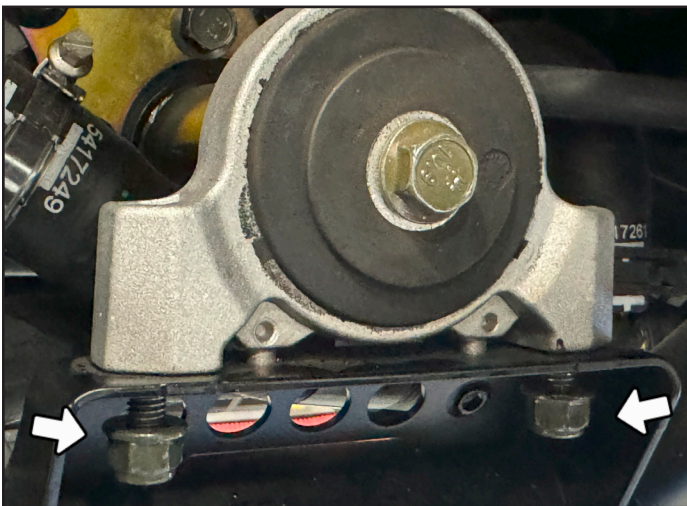
REMOVAL STEP 11:

Remove the 2X 13mm nuts from the driver side motor mount bottom. Leave the bolts in place.



REMOVAL STEP 12:

Loosen 2X 13mm nuts from the passenger side motor mount. Leave a thread or two so the nut remains on the end of the bolt.



REMOVAL STEP 13:

Keeping the vehicle tires off the ground and frame firmly planted on jack stands. Carefully raise the transmission approximately 1"

NOTE: Do not overdo this to avoid potentially damaging wiring harnesses or water lines. Lift slowly.

In our installations, the driver side motor mount bolts just barely clear the mounting bracket to create enough room to work the rear driveline section out from under the clutch inner housing.

REMOVAL STEP 14:

Slip the rear section of the driveline off the transmission output shaft. Slide the rear section of the driveline towards the back of the vehicle until the front slip disengages.

REMOVAL STEP 15:

Move the front section of the driveline to the side allowing room to work, secure with a zip tie if needed. You do not need to remove this part of the driveline.

REMOVAL STEP 16:

Now remove the rear section of the driveline forward and down. If it does not clear the 'X' in the chassis, you may need to carefully raise the transmission until it does.

REMOVAL STEP 17:

Remove the OE carrier bearing from the rear section of the the driveline.

Tools Needed: 2 or 3 jaw gear puller, 1.5" x 8" pipe/sleeve, hammer.

INSTALLATION INSTRUCTIONS

CARRIER BEARING 2024+ XP1000 2 SEAT



INSTALLATION OF SANDCRAFT CARRIER BEARING

NOTE: You now need to install the SANDCRAFT Carrier Bearing onto the OE drive shaft before re installing it into the vehicle. Make sure all surfaces are clean and free of contaminants before installing.

INSTALLATION STEP 1:

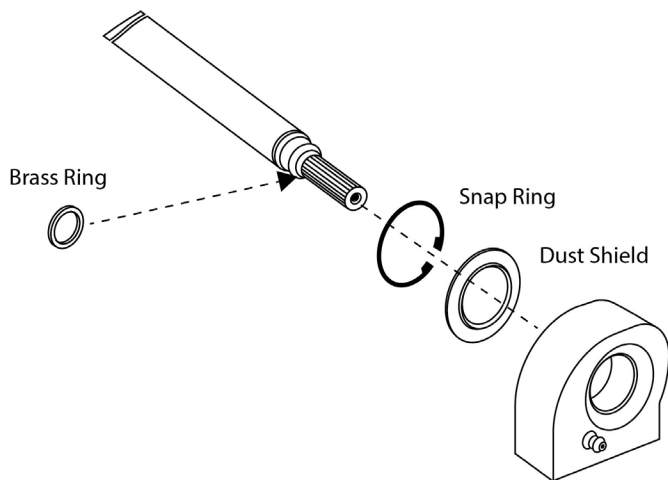
Disassemble the SANDCRAFT carrier bearing carrier from the carrier bearing base plate by removing 2X bolts. (size 17mm).

INSTALLATION STEP 2:

Supplied is a brass ring. This brass ring goes on the OE driveline before the bearing installation. Pay attention to the chamfer on the brass ring. The chamfer side goes on first so that it is against the driveline shoulder. Using a press, install the new carrier bearing with green threadlocker with the snap ring facing the brass ring. Use green threadlocker on the inner surface of bearing and on the shoulder of the driveshaft. Press bearing until it is fully seated against the brass ring.

!!TAKE CARE WHEN PRESSING THE CARRIER BEARING ONTO THE SHAFT. USE A PIPE OR TUBE AND CAREFULLY PRESS THE BEARING INTO PLACE. APPLY PRESSURE ONLY TO THE INNER RACE OR YOU WILL DAMAGE THE BEARING!!

Be careful not to over press the bearing – this will cause excessive side load pressure and potentially damage bearing. The snap ring side of the bearing housing must go on first. The snap ring side of the bearing housing will be pressed up against the brass ring. **THIS IS CRITICAL**



INSTALLATION STEP 3:

Now install the rear section of the OE driveline into the vehicle using the same steps from when removed it. NOTE: Leave the Carrier Bearing baseplate off the assembly off at this time.

INSTALLATION STEP 4:

Align the paint marks on OE driveline and connect the rear driveline to the front driveline.

INSTALLATION STEP 5:

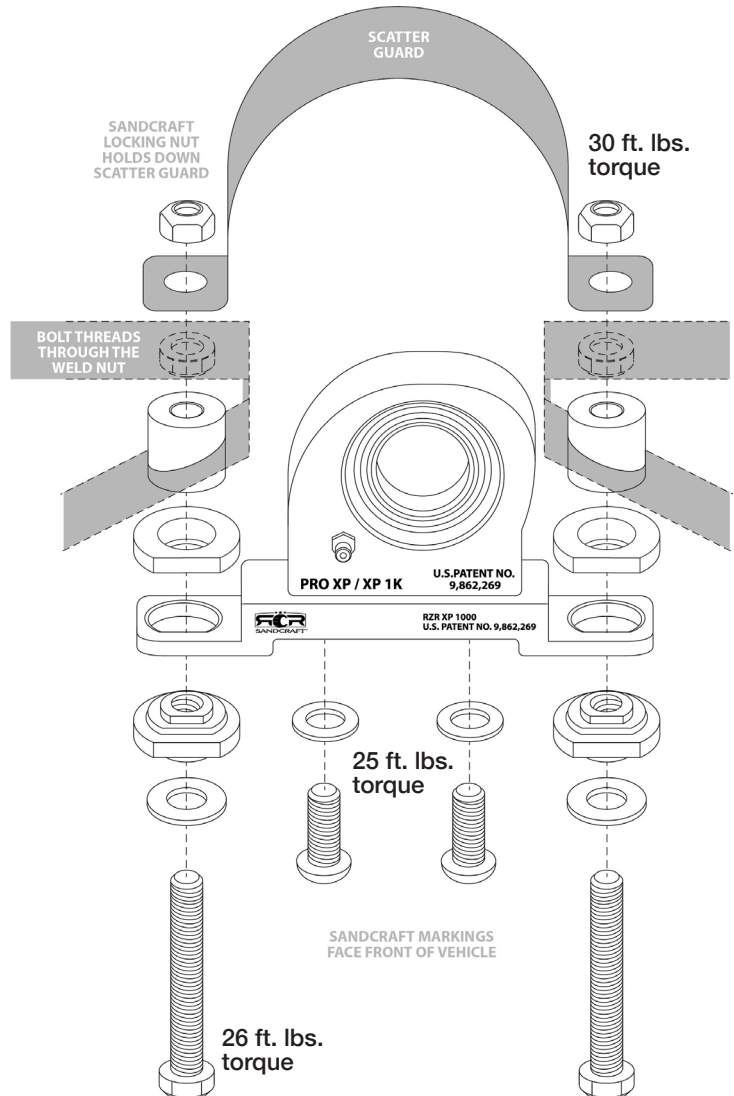
Connect the rear driveline to the transmission output.

INSTALLATION STEP 6:

SLOWLY AND CAREFULLY lower the transmission until the transmission mount holes re align so the bolts can freely pass through. The Transmission should be sitting in a location to set the bearing alignment length.

INSTALLATION STEP 7:

Install Carrier Bearing Base Plates and hardware 25 ft. lbs. torque.



INSTALLATION INSTRUCTIONS

CARRIER BEARING 2024+ XP1000 2 SEAT



INSTALLATION STEP 8:

Re install 2X 6mm allen bolts at the transmission output. Torque to 22 ft. lbs.

INSTALLATION STEP 9:

Re install the safety hoop, follow manufacturer torque specs.

INSTALLATION STEP 10:

Re install all Transmission throughbolts, mount bolt, and motor mounts in the same order you removed them. Follow manufacturer torque specs for these components.

INSTALLATION STEP 11:

Re install the clutch cover vent tube & muffler. Follow manufacturer torque specs for these components.

INSTALLATION STEP 12:

Lower the vehicle and re install skid plates.

**PLEASE CONTACT US AT (480)-539-4438 OR
SANDCRAFT@SANDCRAFTMOTORSPORTS.COM
IF YOU HAVE ANY QUESTIONS.**