



SANDCRAFT MOTORSPORTS SHIFT CABLE RETAINER - PRO R INSTALLATION INSTRUCTIONS

THANK YOU FOR PURCHASING FROM SANDCRAFT!

Please read the instructions completely before beginning installation.

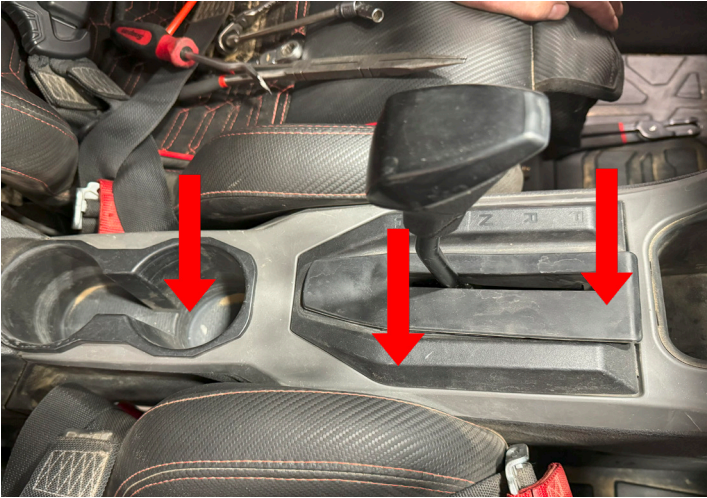


TOOLS REQUIRED:

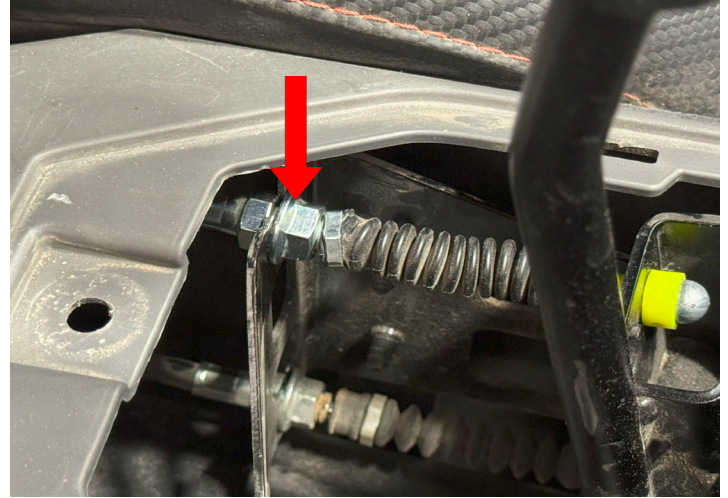
Plastic Rivet Remover
12mm Wrench (X2)
8mm Wrench
10mm Socket
15mm Socket
Wheel Chocks



SANDCRAFT MOTORSPORTS SHIFT CABLE RETAINER - PRO R INSTALLATION INSTRUCTIONS



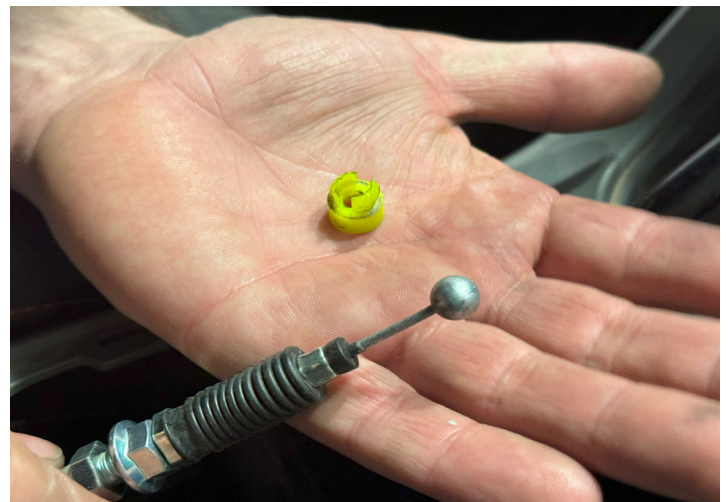
1. Chock the wheels to ensure the vehicle doesn't roll during installation. Remove the shift lever dust cover, gear selector cover and cupholders to expose the shift cable front assembly.



2. Loosen the nut clamping the shift cable to the cage at the rear of the gear selector box. This loosens the cable so you can push it forward and through the side slot to release it.



3. Cut the old plastic cable retainer away from the cable. Do not cut or damage the cable. This plastic component will not be reused.



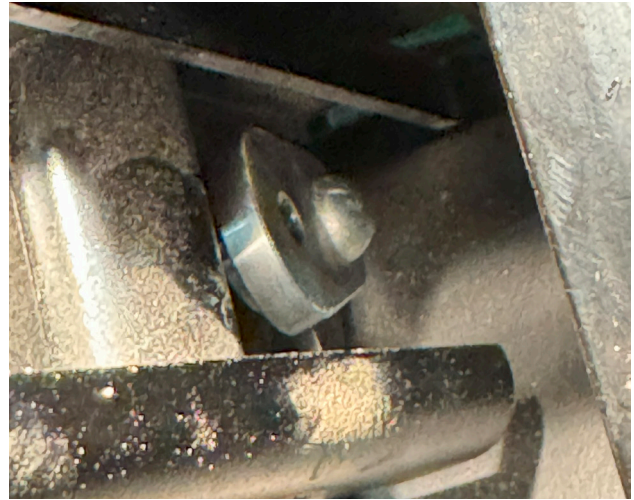
4. Repeat this process for the lower cable.



SANDCRAFT MOTORSPORTS SHIFT CABLE RETAINER - PRO R INSTALLATION INSTRUCTIONS



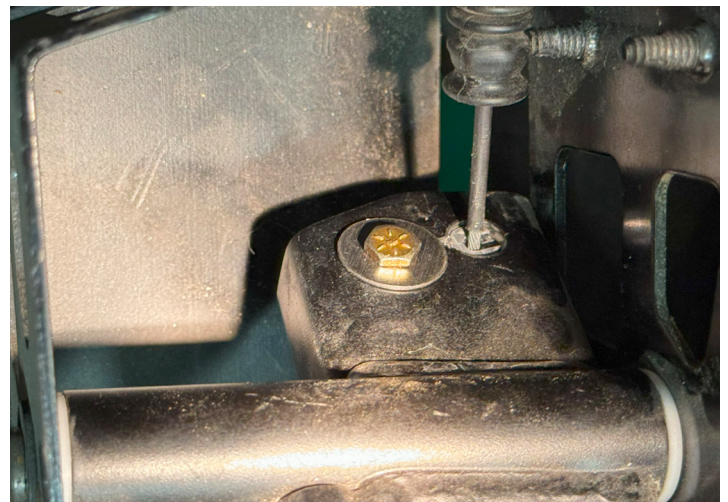
5. Push the lower shift cable through the large hole at the bottom of the shift bracket so it pushes through the shift bracket.



6. IMPORTANT: CAREFULLY Insert the new SANDCRAFT aluminum lower shift cable retainer over the cable and settle the shift cable end into the recessed ball cup. The flat side of the shift cable retainer faces forward. You can lay down a rag below the work area to catch it if it falls.



7. There is not much room to work inside the console. If you drop this part, you may need to remove the skid plate to retrieve it so take your time.



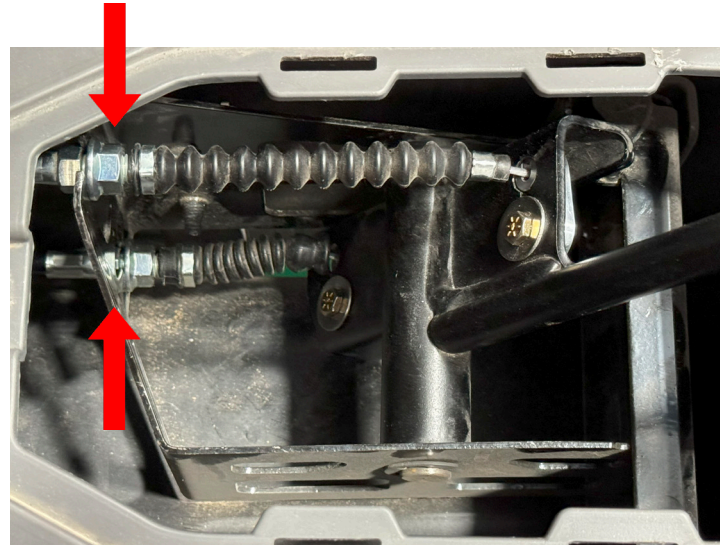
8. Once in place, apply blue threadlocker to the threads and insert the washer and screw to the back side of the shift bracket and torque to 20 in lbs.



SANDCRAFT MOTORSPORTS SHIFT CABLE RETAINER - PRO R INSTALLATION INSTRUCTIONS



9. Repeat this process for the upper cable retainer.



10. Re install the clamp nuts that secure the shift cable to the cage.



11. If there is play in the shift cable, you may need to tighten the shift cables at the transmission. Follow manufacturer specifications when adjusting shift cable tension (if needed). Re install the shift lever dust cover, gear selector cover and cupholders.

**PLEASE CONTACT US AT (480)-539-4438 OR
SANDCRAFT@SANDCRAFTMOTORSPORTS.COM IF YOU HAVE ANY QUESTIONS.**