

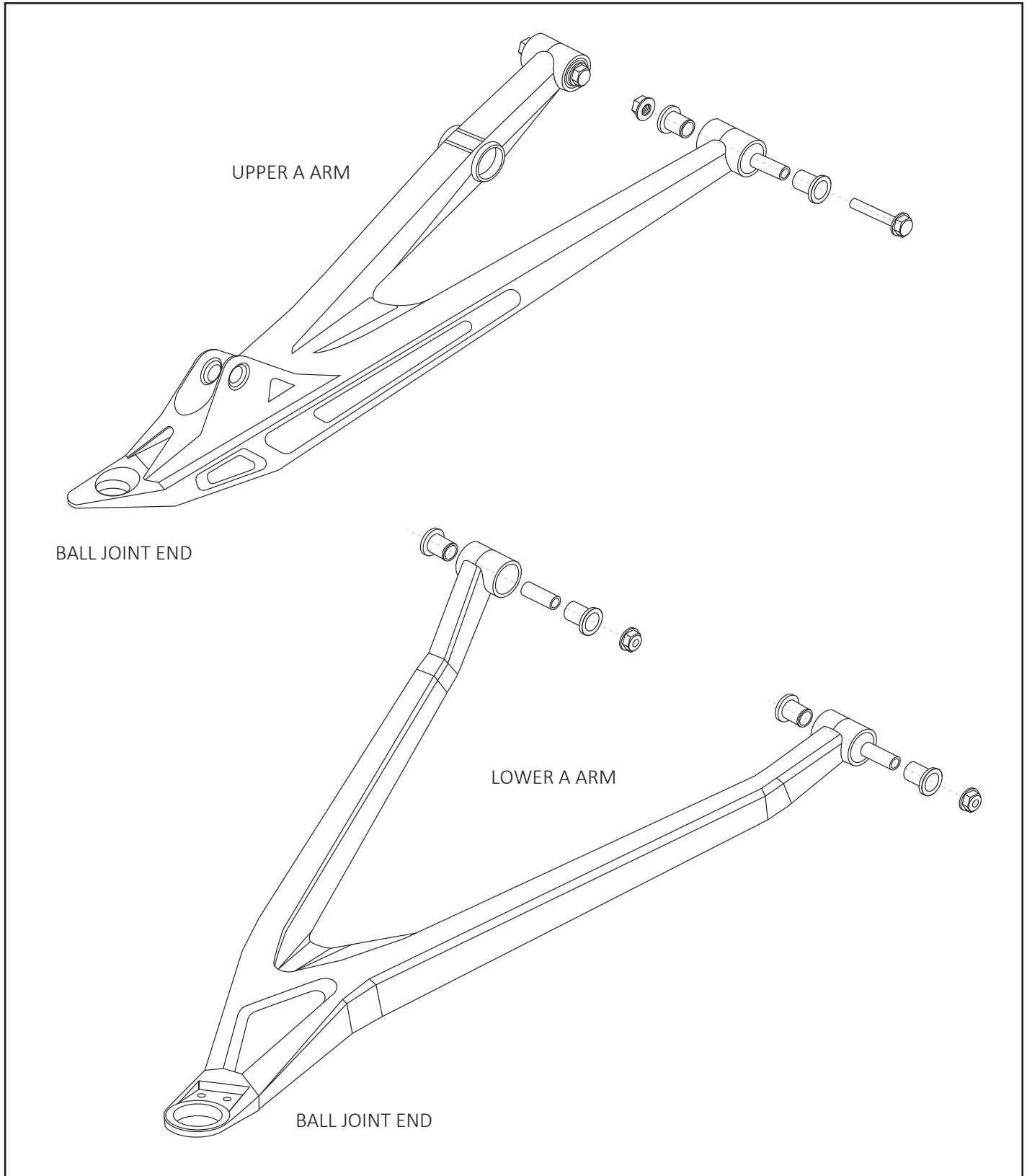
INSTALLATION INSTRUCTIONS

SANDCRAFT A-ARM BUSHING & SLEEVE KIT - CAN AM X3



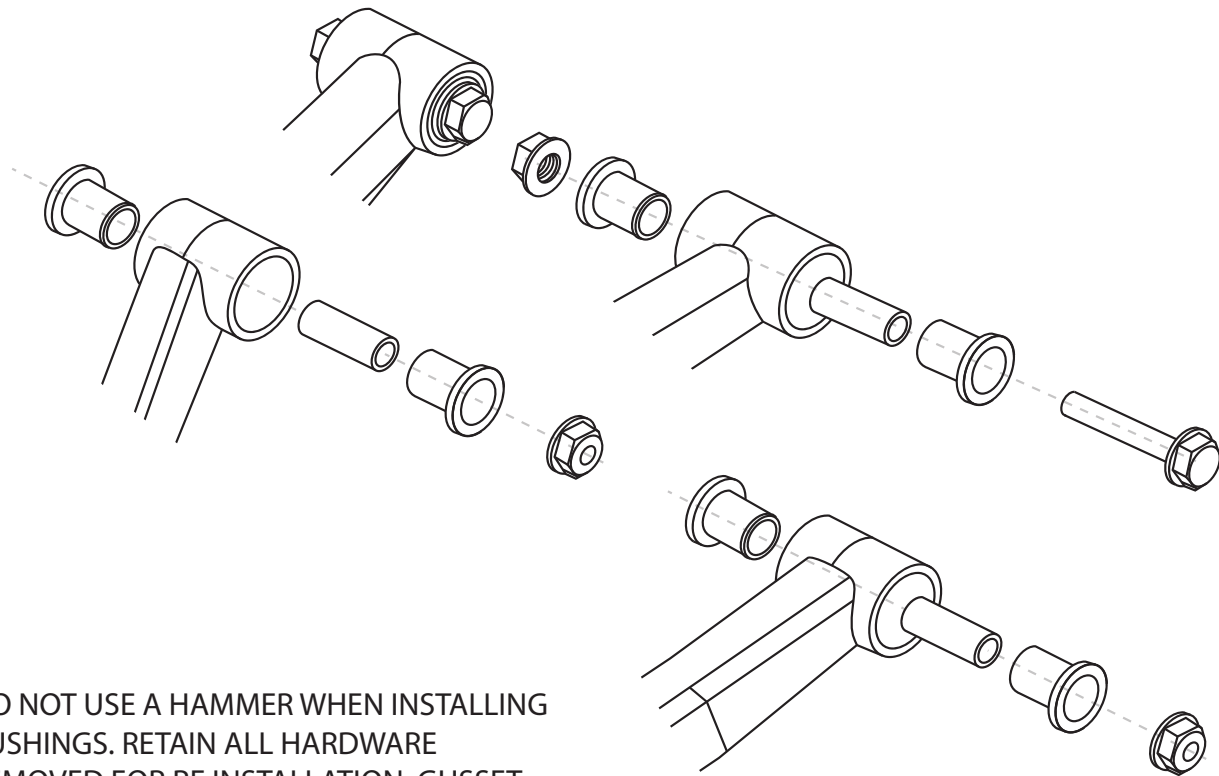
TOOLS REQUIRED:

- Grease
- Floor jack & jack stands
- Rubber mallet
- Torque wrench
- 18mm wrench (2)
- Lug wrench



INSTALLATION INSTRUCTIONS

SANDCRAFT A-ARM BUSHING & SLEEVE KIT - CAN AM X3



DO NOT USE A HAMMER WHEN INSTALLING BUSHINGS. RETAIN ALL HARDWARE REMOVED FOR RE INSTALLATION. GUSSET PLATES AND WEAR PLATES ARE REQUIRED.

1. Remove the front clip to allow access to lower control arm hardware.
2. Break loose the wheel lug nuts on the wheels, then safely jack the front end up, secure it and remove the front wheels.
3. Remove the 18mm lower shock mounting bolt & nut.
4. Remove the 18mm upper shock mounting bolt & nut, remove shock. Replace upper shock bolts to help support the radiator while you are working.
5. Remove the 18mm upper A Arm hardware.
7. Remove the gusset plates.
8. Slide the upper control arm forward, remove the wear plates.
9. Remove the factory bushings and sleeves, clean all surfaces thoroughly & inspect for damage.
10. Grease your new SANDCRAFT Delrin bushings and insert them into the Upper A Arm.
11. Grease and install the SANDCRAFT Collars.
12. Install new wear plates and slide the upper control arm back onto the studs.
13. Remove the lower A Arm by pushing it forward, remove wear plates.
14. Remove the factory bushings and sleeves, clean all surfaces.
15. Grease your new SANDCRAFT Delrin bushings and insert them into the Upper A Arm.
16. Grease and install the SANDCRAFT Collars.
17. Install new wear plates and slide the lower control arm back onto the studs.
18. Re install hardware in the same order you removed it following the manufacturers torque spec.
19. Grease the four (4) zerk fittings on the control arms before completing re assembly.
20. Re install the wheels and torque to manufacturer spec. Lower the vehicle to the ground.
21. Double check all your hardware is installed and torqued correctly.